



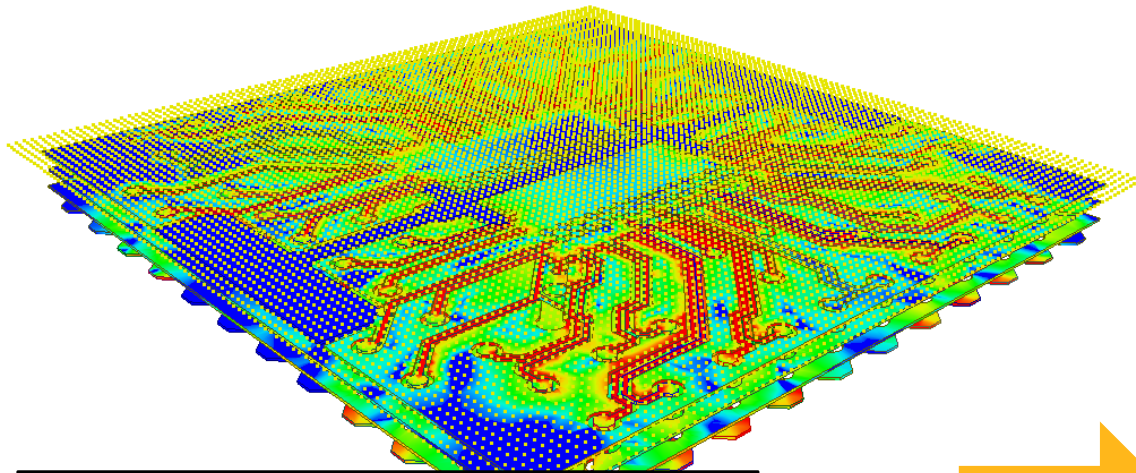
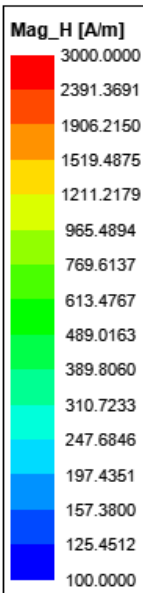
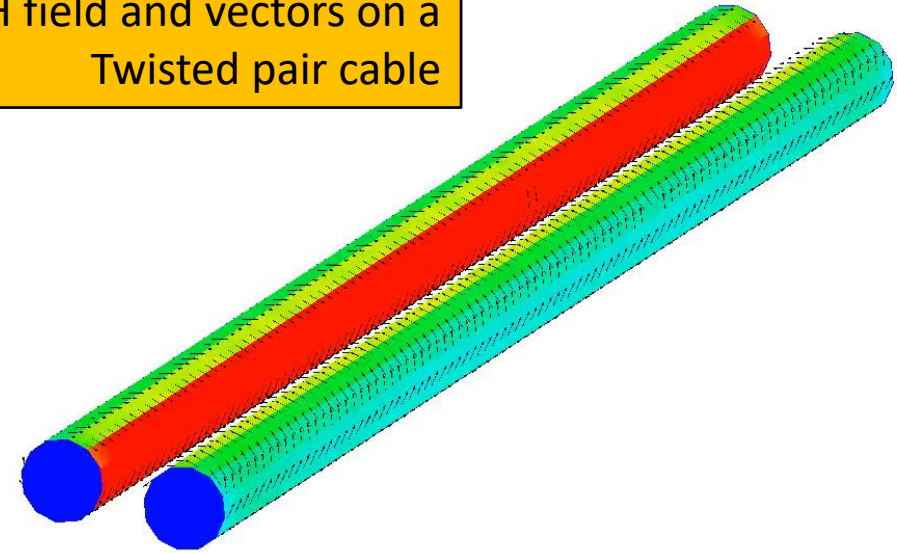
Ansys 2022 R1 Q3D新功能介绍

新科益系统与咨询（上海）有限公司

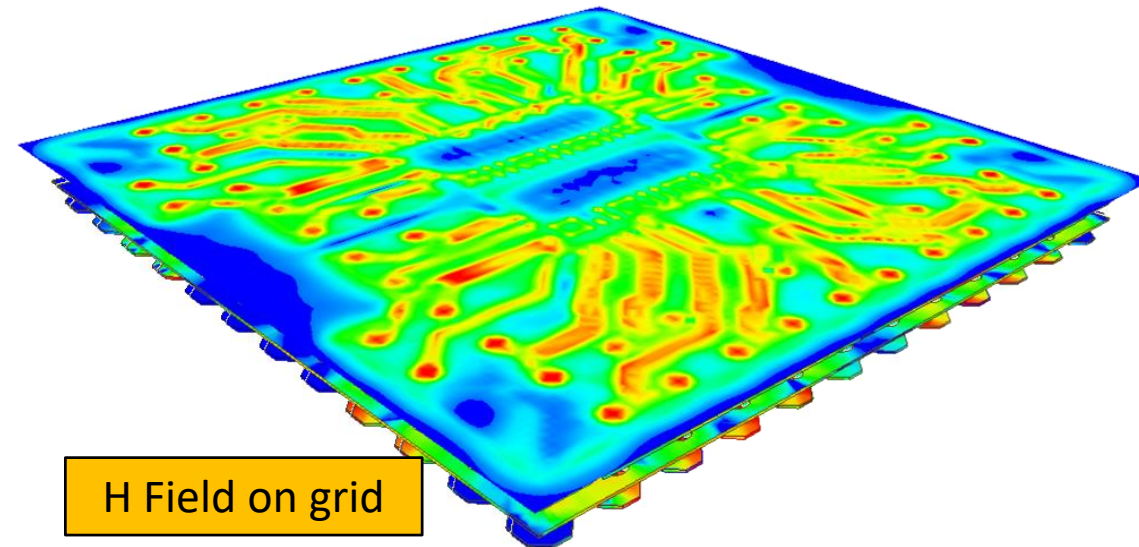
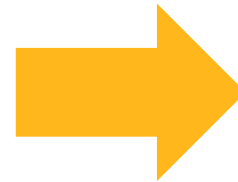
Magnetic field visualization for AC-RL

- Support H field overlay and export to Enight
- Support H field report on user defined EM fields setup
 - Box, Line, Rectangle, Sphere
- 2D contour plot overlay to modeler window

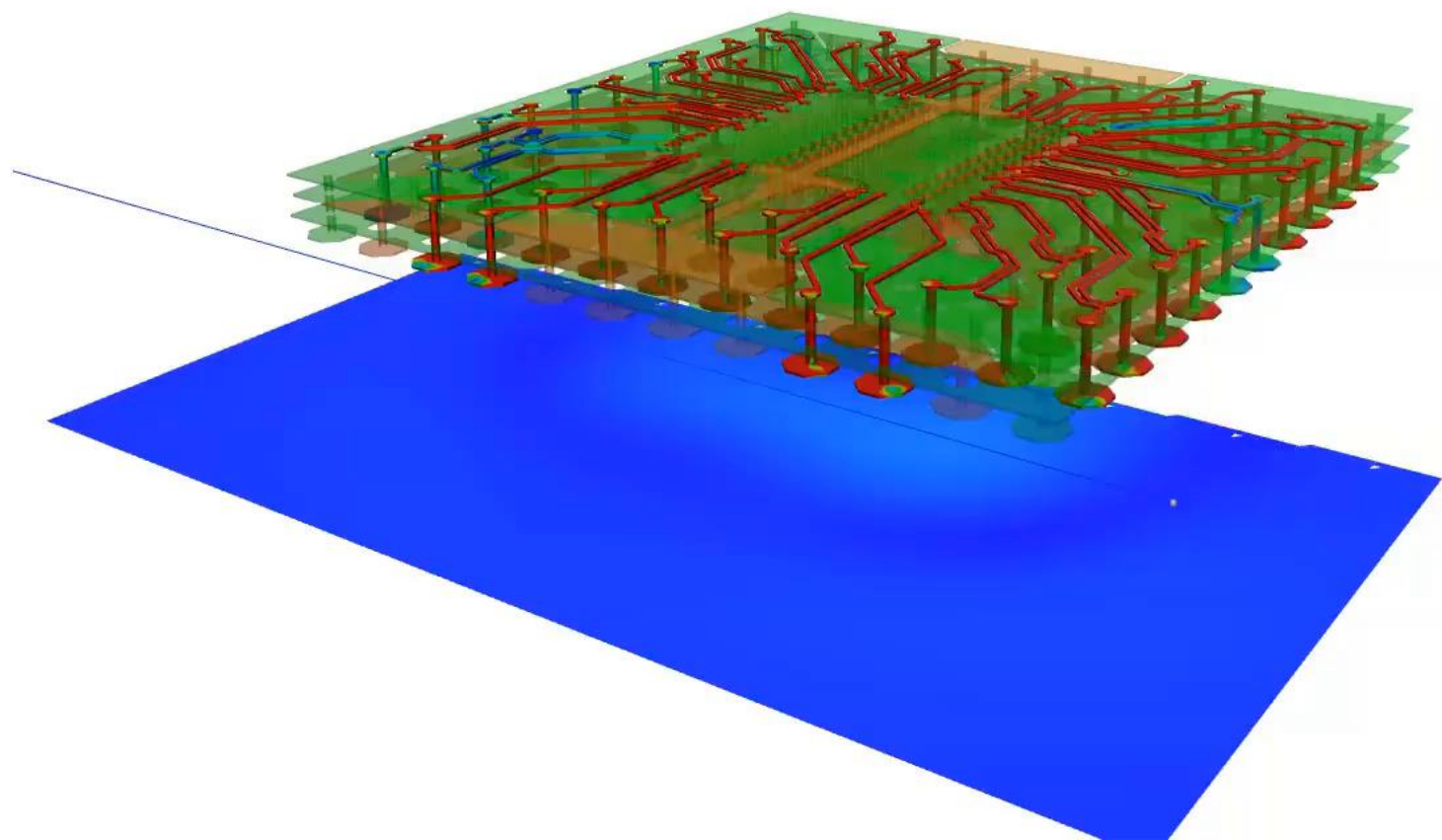
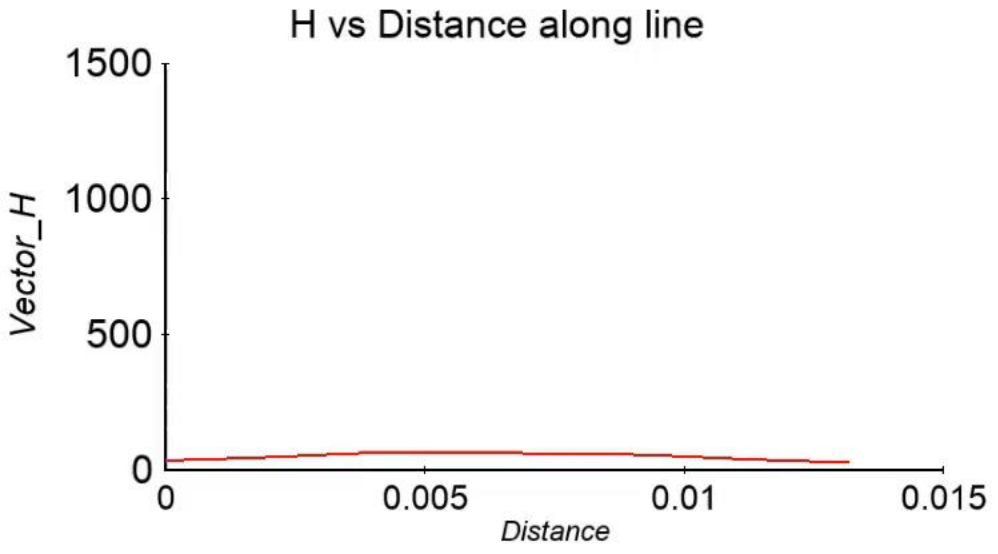
H field and vectors on a Twisted pair cable



Rectangular grid 1mm over package

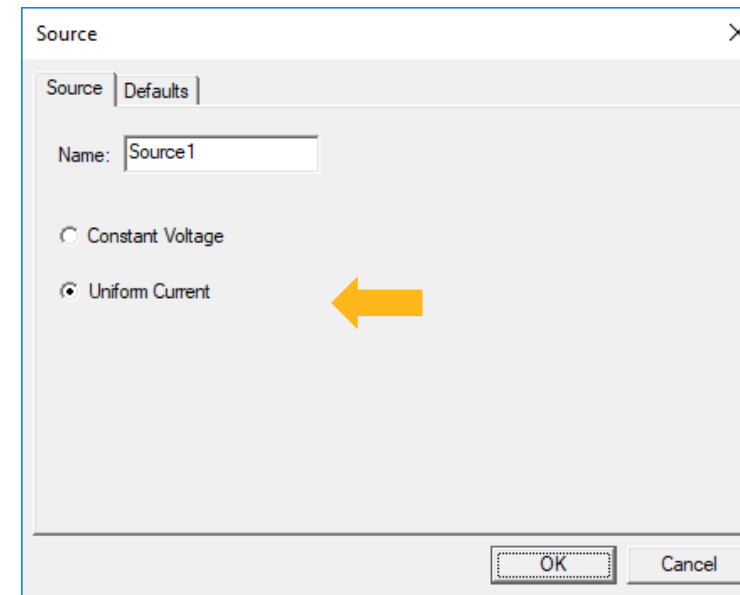
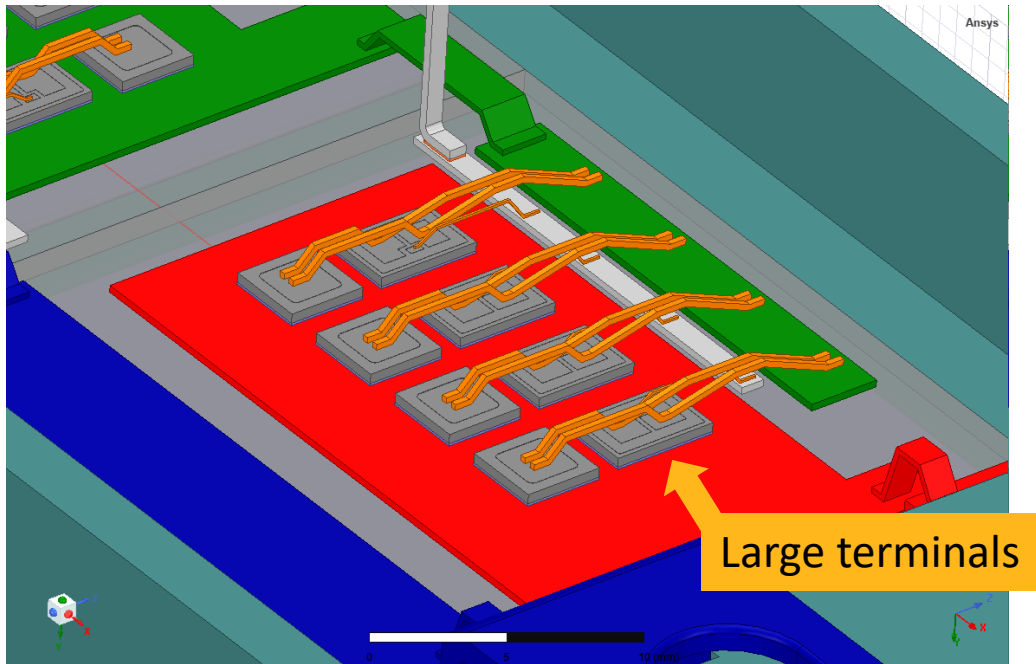


H Field on grid



Uniform current terminals for AC-RL and DC-RL

- Released uniform current terminals for the DC-RL solver
 - Uniform current and constant voltage terminals can coexist
 - Required for modeling power modules
 - Adding additional terminals will not impact the inductance





新科益工程仿真中心



咨询邮箱：ansyssupport@cadit.com.cn

公司网址：<http://www.cadit.com.cn>